

Transparitrade

Multi-issuer investment platforms have become integral tools for the seamless distribution and trading of structured products and other investment products. We offer a white-labeled platform that manufacturers and distributors alike can use. Our customer-friendly fee model and deep integration with other parts of the WSD platform allow clients to utilize a professional issuance platform with custom branding without having to invest the time and resources necessary to develop one.

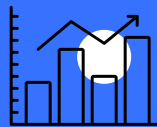
Our solution

- Centralized AML/KYD checks
- Over 18 hours of education and training content
- Automatic product feeds from WSD's SPi database
- Standardized risk indicator and scenarios
- Online marketplace of calendar offerings
- Product builder / RFQ tool with automated flow deals and complex non-flow deals
- Research hub complete with original papers, market data and an underlying explorer
- Portfolio management tool covering key product lifecycle events and ongoing performance



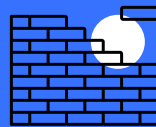
Marketplace

Database of all products on current offer, allowing your clients to conduct backtesting and submit their interest along with specific amounts to invest.



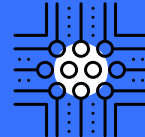
Market analytics

Comprehensive market insights using SPi data and allowing you to share research/product ideas with your clients.



RFQ

Product builder tool to design customized deals and request live pricing from different issuers for a broad range of common payoffs.



Seamless integration

Seamless integration with existing settlement systems and other back office administration tools.

Benefits

White-labeling

- Create a single-issuer platform with custom features and branding
- Cut down on development costs and time to market

Comprehensive feature set

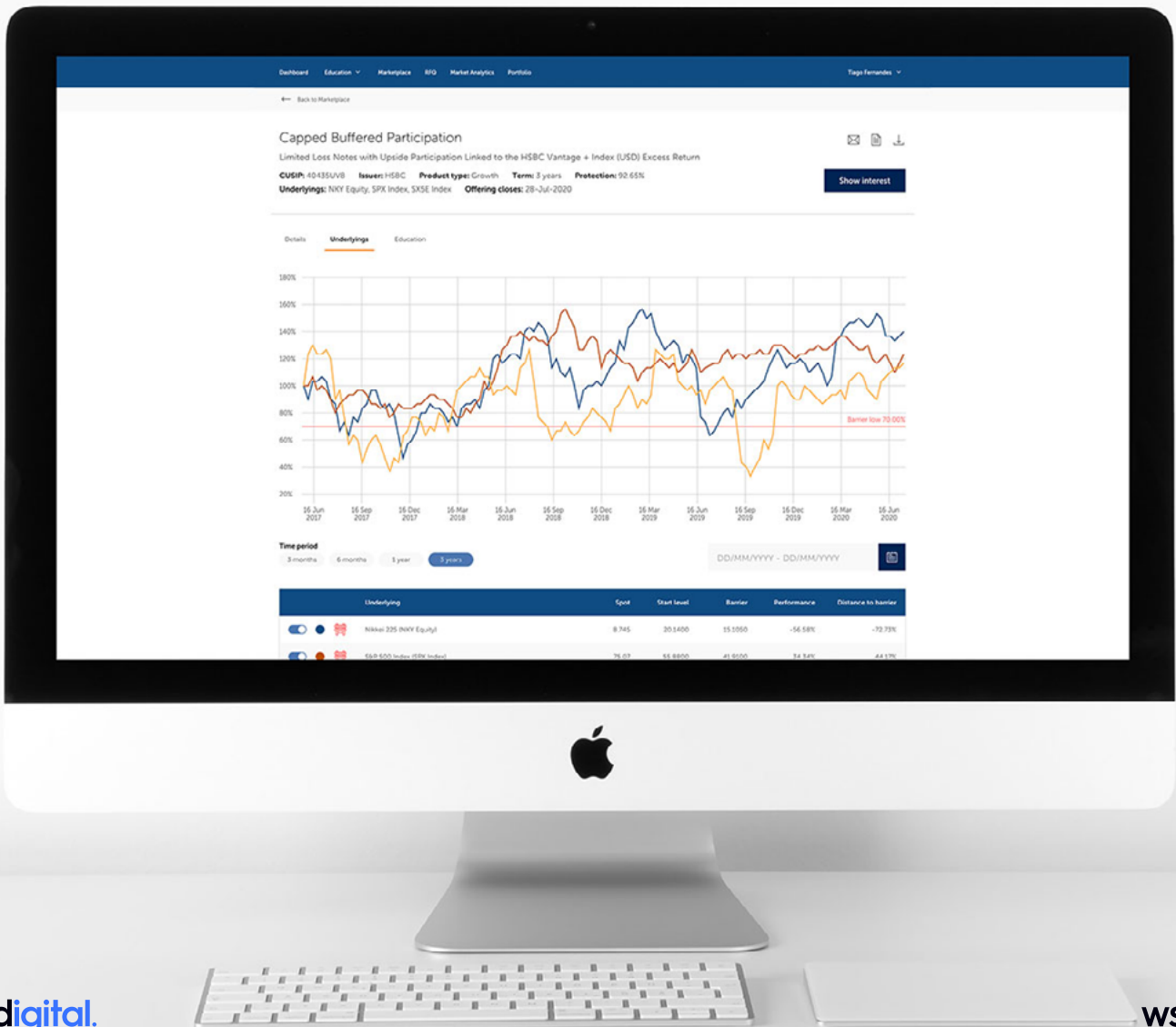
- Master a wide range of concepts using our education and training materials
- Manage your clients' portfolios with our extensive suite of pricing and analytics tools

Data feeds via SPi

- Access key market data and reports generated by SPi
- Stay up-to-date on all the latest research and market trends

Seamless integration

- Connect your and back office IT systems with Transparitrade via API
- Link up with existing settlement systems



Tel +44 (0) 203 865 1787
Email info@wsd.tech
Web www.wsd.tech

wsd...